

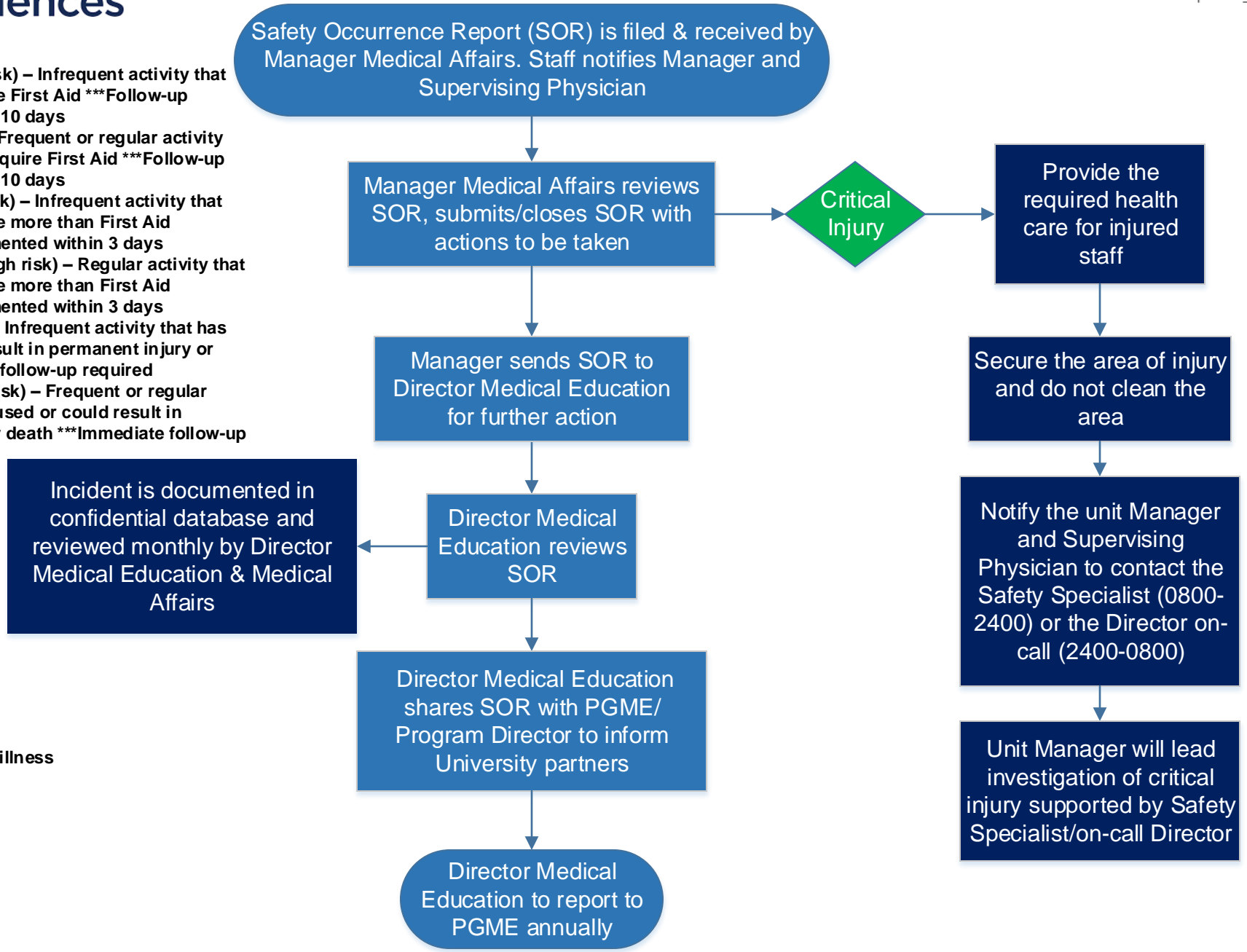


SOR Risk Levels:

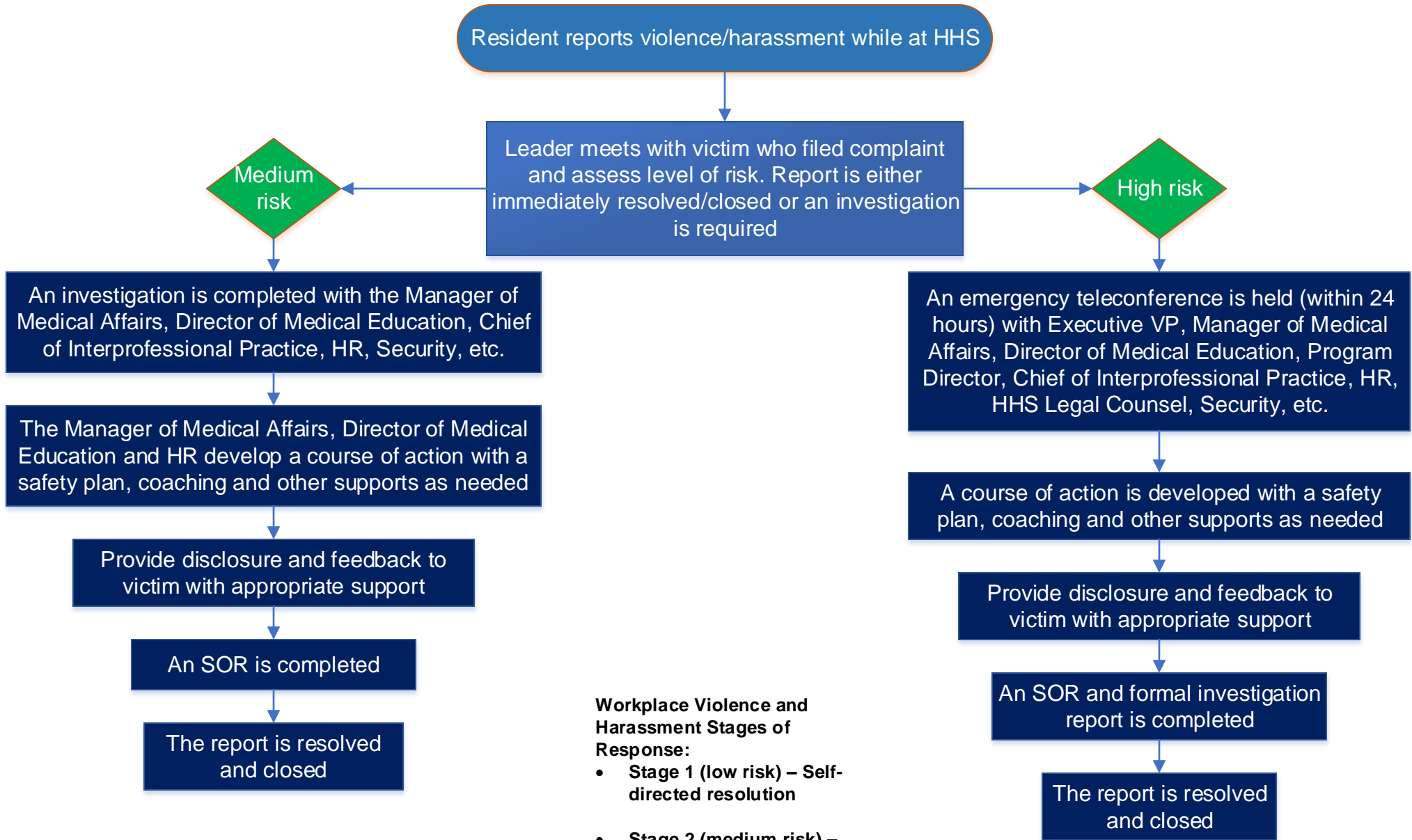
- Level 1 (very low risk) – Infrequent activity that has or could require First Aid ***Follow-up documented within 10 days
- Level 2 (low risk) – Frequent or regular activity that has or could require First Aid ***Follow-up documented within 10 days
- Level 3 (medium risk) – Infrequent activity that has or could require more than First Aid ***Follow-up documented within 3 days
- Level 4 (medium-high risk) – Regular activity that has or could require more than First Aid ***Follow-up documented within 3 days
- Level 5 (high risk) – Infrequent activity that has caused or could result in permanent injury or death ***Immediate follow-up required
- Level 6 (very high risk) – Frequent or regular activity that has caused or could result in permanent injury or death ***Immediate follow-up required

SOR Event Types:

- Employee injury or illness
- Near miss
- Hazard
- Harassment



Incident is documented in confidential database and reviewed monthly by Director Medical Education & Medical Affairs



Workplace Violence and Harassment Stages of Response:

- **Stage 1 (low risk) – Self-directed resolution**
- **Stage 2 (medium risk) – Informal resolution**
- **Stage 3 (high risk) – Formal investigation**

Patient/Family Compliments or Concerns Involving Postgraduate Medicine Learners (Internal Process – Current State)

