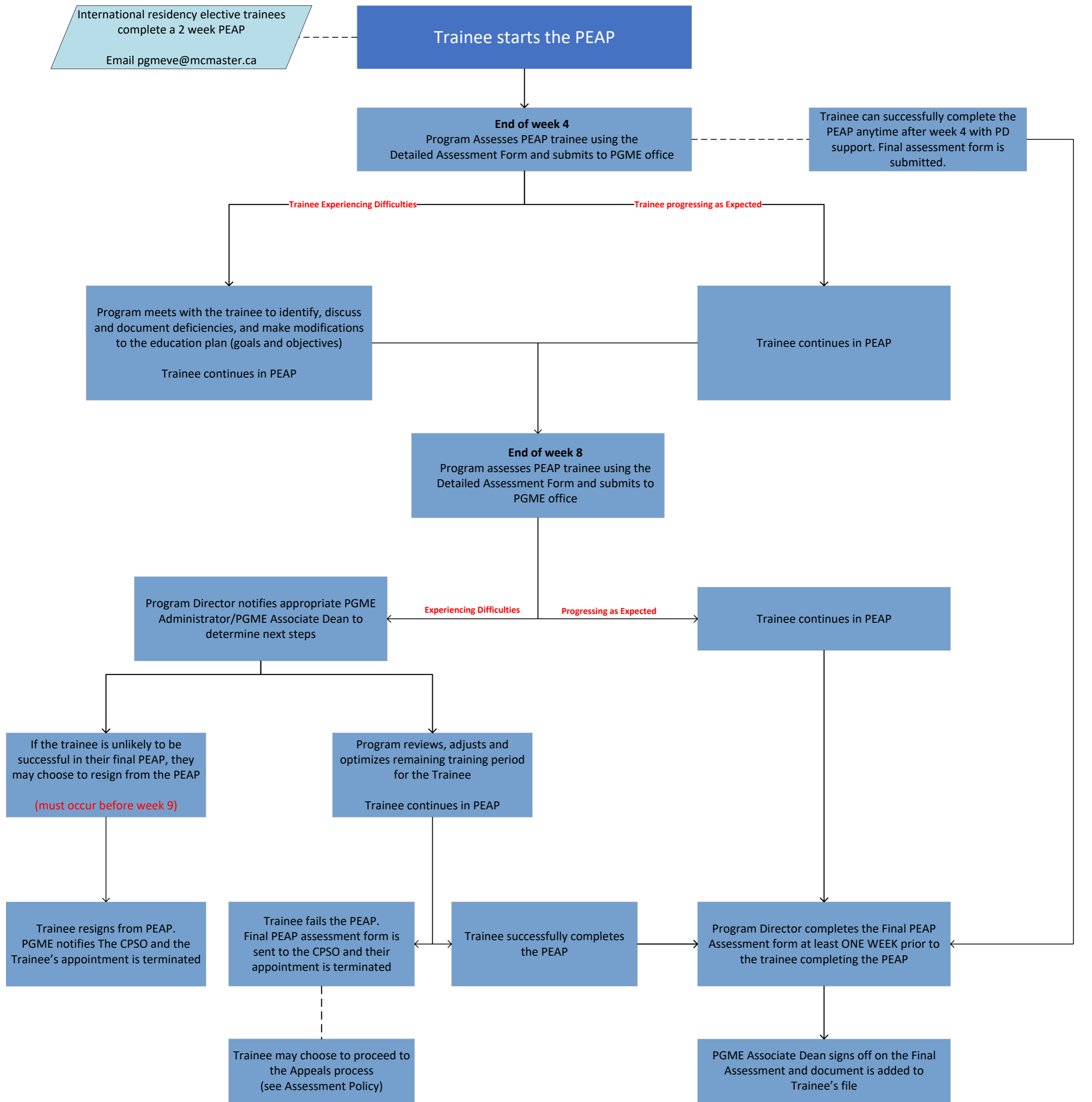


Pre-entry Assessment Program (PEAP) Timeline



PGME Fellowship Administrators – pgmefell@mcmaster.ca
 PGME Resident Administrators – pgmeres@mcmaster.ca
 Associate Dean, PGME – pgmedean@mcmaster.ca

- ### Important PEAP Information
- PEAP training period can be between 4-12 weeks.
 - Trainees will enroll in a PEAP at a medical school in Ontario.
 - The purpose is to assess the general knowledge and competency of the trainee (at the level of training expected in the specialty or subspecialty).
 - **PEAP assessments MUST occur at the 4, 8, and 12 week and must be documented and shared with the trainee.**
 - At the 8-week assessment, if the trainee is experiencing difficulty, the Program Director **must notify** PGME administrator/PGME Associate Dean.
 - Continuous feedback should be ongoing.
 - PEAP training for residents will NOT count towards their training. For a clinical fellowship PEAP training can count towards their training.
 - A trainee cannot resign from the PEAP after the date of Completion.
 - A trainee's PEAP cannot be extended beyond 12-weeks for the purpose of remediation.
 - If a trainee fails the PEAP, they cannot start a subsequent PEAP in the same specialty/subspecialty at the same level.